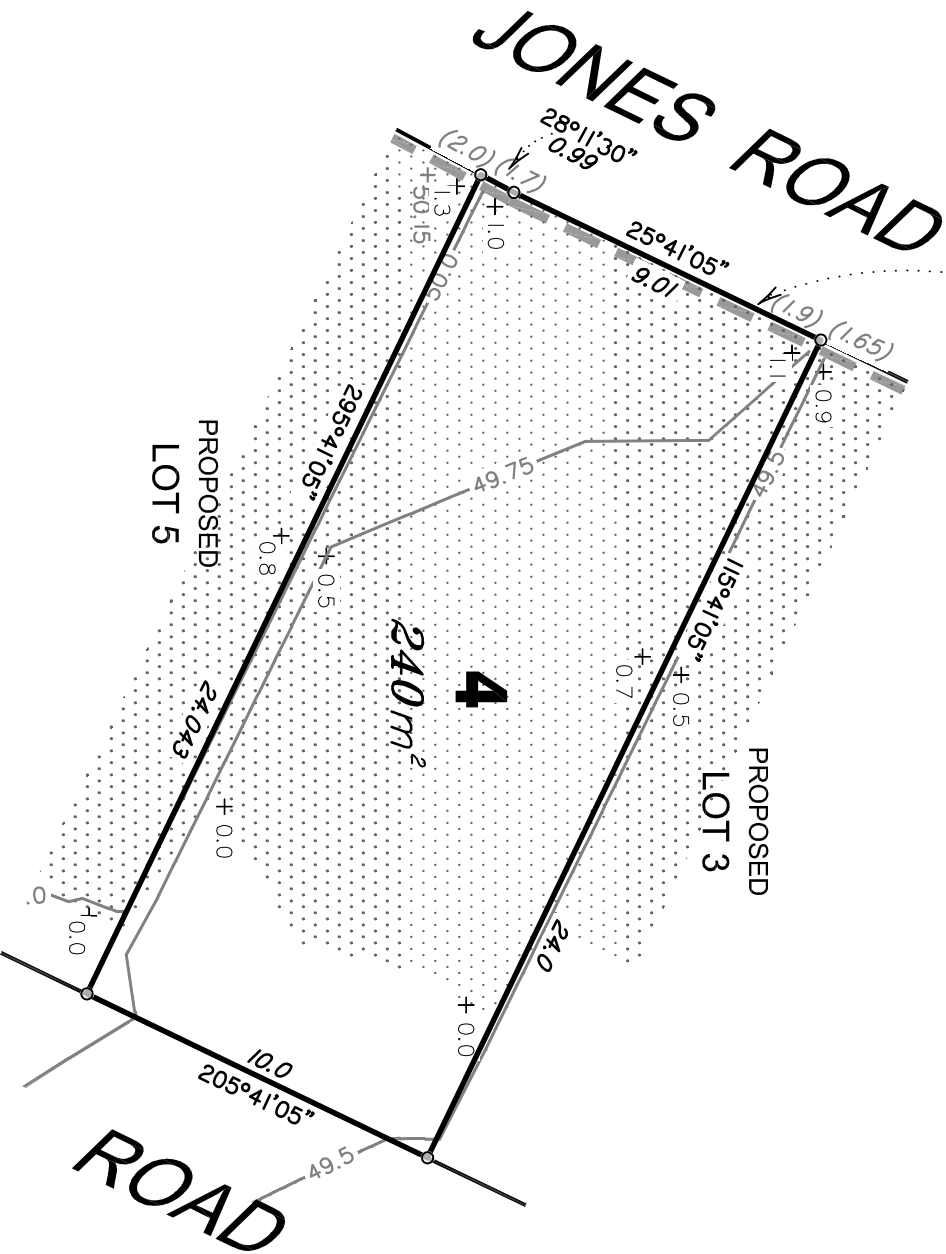
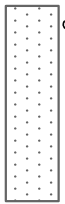





Retaining Wall Lot 4  
 Min Height:- 1.7m  
 Max Height:- 1.9m  
 Average Height:- 1.8m



**LEGEND**

Final surface contours based on A.H.D. datum at an interval of 0.25m,  
 shown as: — 1.0 —  
 Final surface level shown as:- + 43.7  
 Where applicable, areas to be filled from existing surface  
 are shown as:-   
 Depth of Fill shown as:- + 0.7  
 Retaining walls and retaining wall height shown on the lower side of the wall as:-  
 (0.8)

**ADDITIONAL NOTES:**  
 Final surface contours shown hereon have been drawn from data supplied by Hyder Consulting.  
 Depths of fill shown on this plan are from the final surface to the surveyed surface shown on drawing 194100\_114\_S17(A).dwg.  
 Compaction of any fill material placed on this site shall be completed under inspection and testing services in accordance with AS3798:2007.  
 The Proposed Lot 4s Restricted to the depth of 30.48m from the surface as defined by S31234.

**BRENTWOOD FOREST  
 STAGE 7**



**IMPORTANT NOTES:**  
 (These notes are an integral part of this plan)  
 This plan has been prepared for INVESTA for the purposes of a Disclosure Plan Under the Land Sales Act 1984 (as amended). It is not to be used by any other person or corporation or for any other purposes and is subject to the following limitations:  
 Please refer to the approved Development Application for conditions relating to the LOT and to approved Operational Works drawings for services location and possible easements.  
 The LOT dimensions and area shown hereon are subject to final field survey and also to the requirements of Council and any other authority which may have requirements under any relevant legislation.

**THESE DRAWINGS AND DRAWINGS ARE COPYRIGHT AND ARE NOT TO BE USED OR REPRODUCED WITHOUT THE WRITTEN PERMISSION OF THE DATA SOURCES**  
 Design Contours 194100\_114\_S17(A).dwg  
 Engineering Design 194100\_114\_S17(A).dwg  
 Existing Surface 194100\_114\_S17(A).dwg

No.	Revisions	Date	CHKD

Locality: BELLEBIRD PARK  
 Local Authority: L.C.C.  
 Horizontal Meridian: SPZ76300  
 Vertical Level Datum: AHD D  
 Level Origin: PM44903(RL5,692)  
 Scale: 1:200 @ A4  
 Designed: Hyder Consulting  
 Drawn: EIM  
 Checked: EIM/SSH  
 Plot Date: 09 Jul, 2015  
 Computer File Ref: 30271 DP4(A).dwg

**DISCLOSURE PLAN  
 of Proposed LOT 4  
 (Restricted)  
 being part of  
 Lot 510 (Restricted)  
 on SP276300**



BRISBANE 07 3468 4300  
 MACKAY 07 4296 1050  
 CAIRNS 07 4651 6223  
 ROSSETTINE 07 4651 2222  
 Email: mail@thg.com.au www.thg.com.au  
 ASB 25 664 671 374  
 Queensland Surveying Pty Ltd (A The Resource Strategists)  
 Drawing No 30271-DP4 Issue A