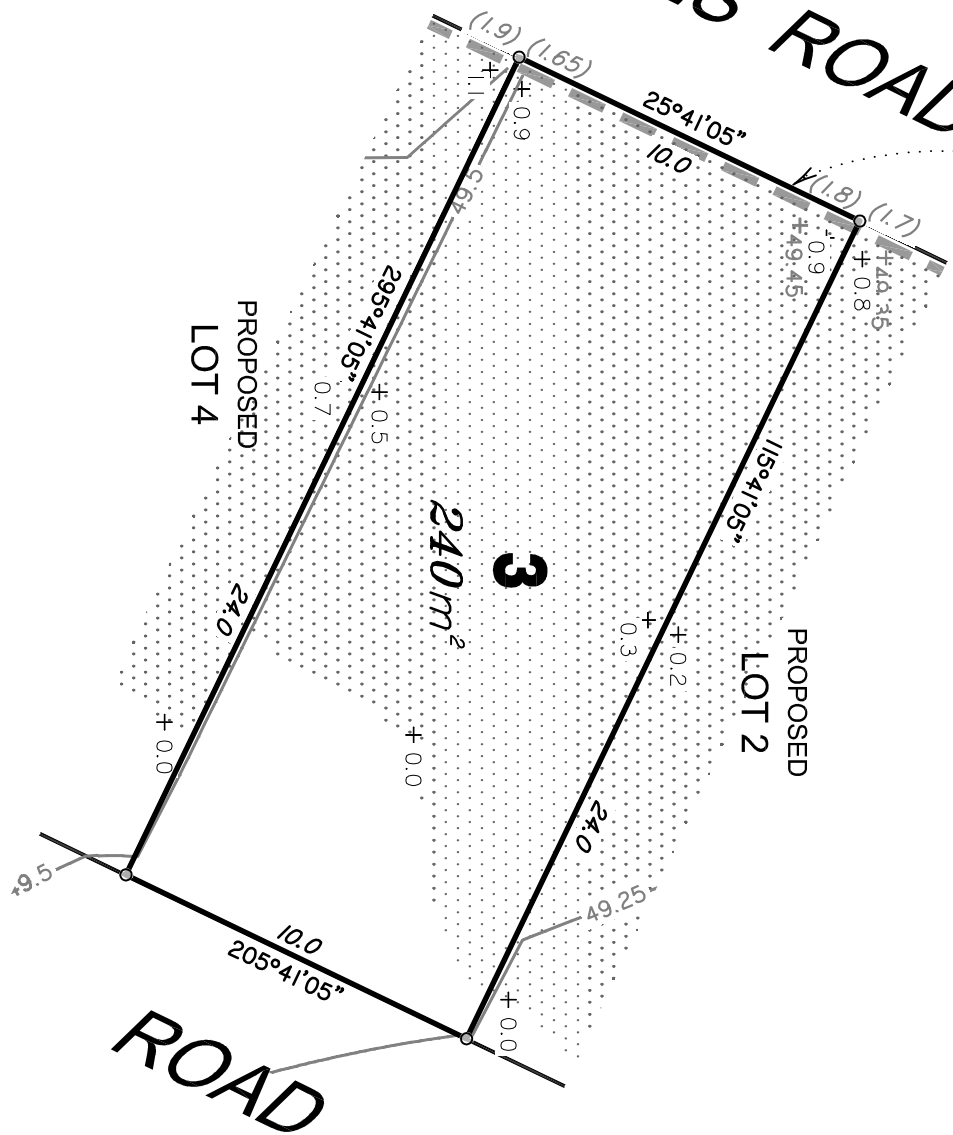


Retaining Wall Lot 3  
 Min Height:- 1.65m  
 Max Height:- 1.8m  
 Average Height:- 1.72m

# JONES ROAD



## LEGEND

- Final surface contours based on A.H.D. datum at an interval of 0.25m, shown as: — 1:0 —
- Final surface level shown as:- + 43.7
- Where applicable, areas to be filled from existing surface are shown as:-
- Depth of Fill shown as:- + 0.7
- Retaining walls and retaining wall height shown on the lower side of the wall as:-

10m 501mm 1001mm 30m 1501mm SCALE BAR

## BRENTWOOD FOREST STAGE 7



**IMPORTANT NOTES:**  
 (These notes are an integral part of this plan)  
 This plan has been prepared for INVESTA for the purposes of a Disclosure Plan Under the Land Sales Act 1984 (as amended). It is not to be used for any other person or corporation or for any other purposes and is subject to the following limitations:  
 Please refer to the approved Development Application for conditions relating to the LOT and to approved Operational Works drawings for services location and possible easements.  
 The LOT dimensions and area shown hereon are subject to final field survey and also to the requirements of Council and any other authority which may have requirements under any relevant legislation.

**THESE DRAWINGS AND DRAWINGS ARE COPYRIGHTED AND ARE NOT TO BE USED OR REPRODUCED WITHOUT THE WRITTEN PERMISSION OF THE DESIGNER**

**DATA SOURCES**  
 Coordinates: 194100.1 & P NORTH STC47.dwg  
 Design Contours: 150830 In.dwg  
 Engineering Design: KCS-A008713-AV000REV01 BSE.dwg  
 Existing Surface: 194100.114 SP701.dwg

NO.	REVISIONS	DATE	CHKD
1	Original	11/7/15	SSH

Locality: BELLRIB PARK  
 Local Authority: L.C.C.  
 Horizontal Meridian: SPZ76300  
 Vertical Level/Datum: AHD D  
 Level Origin: PM44903(R)LS6592)  
 Scale: 1:200 @ A4  
 Designed: Hyder Consulting  
 Drawn: EIM  
 Checked: EIM/SSH  
 Plot Date: 09 Jul, 2015  
 Computer File Ref: 30271 DPq(A).dwg

**DISCLOSURE PLAN  
 of Proposed LOT 3  
 (Restricted)  
 being part of  
 Lot 510 (Restricted)  
 on SP276300**



**THG**  
 BRISBANE (07) 3468 4300  
 MACKAY (07) 2986 1050  
 CAIRNS (07) 4651 6223  
 ROSSETTINE (07) 5451 2811  
 Email: [mail@thg.com.au](mailto:mail@thg.com.au) www.thg.com.au  
 ASB 25 664 671 374  
 Queensland Surveying Pty Ltd (VIA THE RESOURCE STRATEGISTS)  
 Drawing No: 30271-DP3 Issue: A

**ADDITIONAL NOTES:**  
 Final surface contours shown hereon have been drawn from data supplied by Hyder Consulting.  
 Depths of fill shown on this plan are from the final surface to the surveyed surface shown on drawing 194100.114 SP7(A).dwg.  
 Compaction of any fill material placed on this site shall be completed under inspection and testing services in accordance with AS3798-2007.  
 The Proposed Lot 1s Restricted to the depth of 30.48m from the surface as defined by S31234.  
 Copyright © Queensland Surveying Pty Ltd v/a THG Resource Strategists 1/7/2015.